

A

B

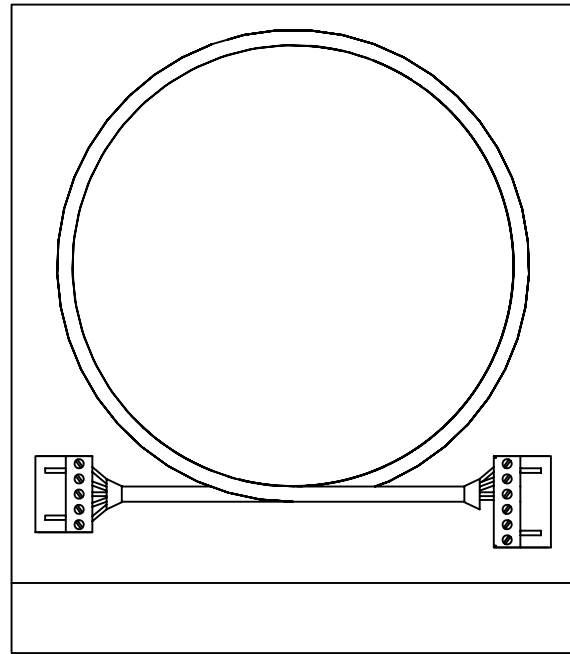
C

D

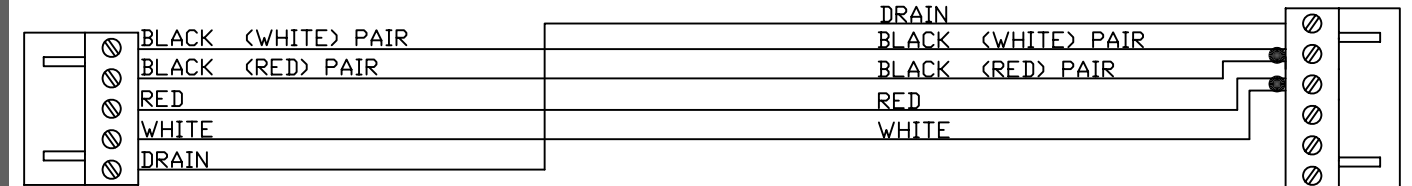
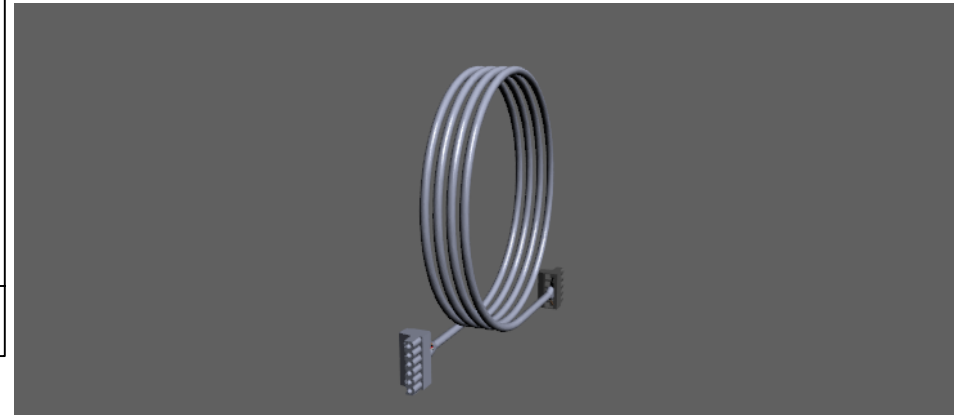
E

REVISION HISTORY

REV	BY	RELEASE DATE	DESCRIPTION	ORIGINATOR	CHANGE ORDER
A	EM	09/10/12	FIRST RELEASE	TB	3229



For shipping, place coiled cable in 9" x 12" plastic bag and tape closed



2 5 Pin Connector

6 Pin Connector 4

3 1-1/2" Shrink Tubing (2 Places)

BLACK (WHITE) PAIR
 BLACK (RED) PAIR
 RED
 WHITE
 DRAIN

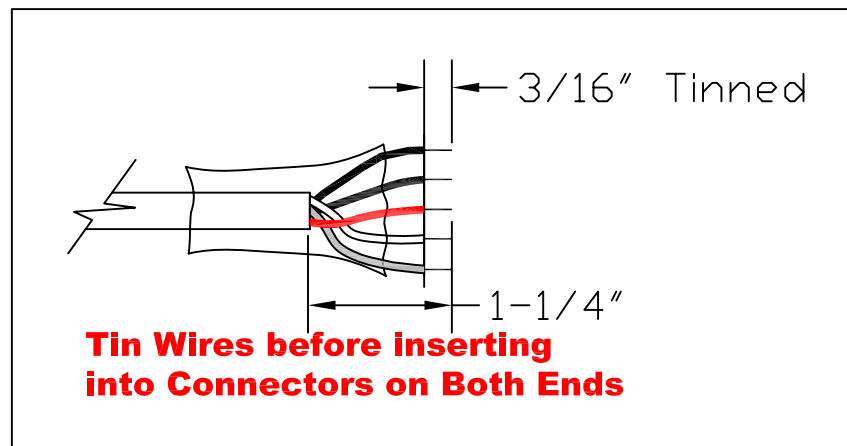
DRAIN
 BLACK (WHITE) PAIR
 BLACK (RED) PAIR
 RED
 WHITE

1 TWISTED SHIELDED PAIR CABLE

DRAIN WIRE
 BOTH BLACK WIRES
 RED & WHITE WIRES

Length is 72 inch +/- 0.25" from end of connector to other end of connector

- Note: 1. The raw cut length for the cable is 70.9 inches
- 2. Torque screws to manufacturer's specification



<p>AUTOCAD GENERATED DRAWING</p> <p>THESE DRAWINGS AND SPECIFICATIONS ARE THE PROPERTY OF ELECTRO INDUSTRIES AND SHALL NOT BE REPRODUCED, COPIED, OR USED FOR MANUFACTURE OR SALE OF APPARATUS WITHOUT WRITTEN PERMISSION OF ELECTRO INDUSTRIES.</p>				<p>Electro Industries/Gaugetech 1800 SHAMES DRIVE WESTBURY, NEW YORK 11590-1730</p>			
<p>TOLERANCES AND SYMBOLGY PER ANSI/AMSE Y14.5M-1994 DIMENSIONS SPECIFIED ARE AFTER ADDITIVE FINISH.</p>		<p>MATERIAL:</p>		<p>TITLE: SHARK COMMUNICATION CABLE</p>			
<p>.X ±</p> <p>.XX ±</p> <p>.XXX ±</p> <p>.XXXX ±</p>		<p>ANGLES ± 1°</p> <p>SURF. FINISH</p>		<p>DRAWN BY: EM</p> <p>ENGINEER CHECK: TB</p> <p>DOCUMENTATION CHECK: DS</p>		<p>DATE: 09/10/12</p> <p>DATE: 09/10/12</p> <p>DATE: 09/10/12</p>	
<p>SIZE B</p>		<p>SCALE DO NOT SCALE DRAWING</p>		<p>TITLE DESCRIPTION:</p> <p>STAND ALONE INTERFACE CABLE</p>			
<p>PART NUMBER: E145350</p>				<p>REV. NO A</p>	<p>CHANGE ORDER 3229</p>	<p>RELEASE DATE 09/10/12</p>	<p>SHT OF 1/1</p>

A

B

C

D

E